

NOTICE TO MARINERS

DUDGEON OFFSHORE WIND FARM CONSTRUCTION WORKS

NOTICE IS HEREBY GIVEN that construction activities are in progress at the Dudgeon Offshore Wind Farm and Export Cable Corridor.

Foundation installation is completed and the Offshore Substation (OSS) has been installed. The vessel SEA Challenger will be used for accommodation at the OSS location and will later perform the wind turbine generator installation onto the Wind turbine foundations (TP and MP). Work is ongoing and planned to be completed in Q3, 2017

The Vessel Njord Esvagt will be performing preparation support for operation and will be in regular transit between the Dudgeon windfarm area and port. This will start in September and continue during the field operation.

Cable protection work

The Grand Canyon will be performing burial of the Inter Array Cables and for the unprotected section of the export cable (ref. p6). This operation is ongoing and expected to be completed late November, 2016.

Guard vessel

The Adventure will act as a guard vessel to safe guard the wind farm area. During port calls, Advance will be her back-up. Adventure will be on location from end April expected to be completed late October.

The Rachael S or Sorrento will act as guard vessel at the cable jointing location until splice is trenched and adequate protection by burial is confirmed.

The vessel Vestland Cygnus will be used for personnel accommodation at the Dudgeon field area, and for transfer off personnel based on “walk to work” onto TP’s and the OSS. Vestland Cygnus is on location and will be operating in the field until late 2016.

Vestland Cygnus is supported by personnel transfer vessels

Commissioning activities

For the commissioning work there are several Crew transfers vessels that operate in the field on a daily basis. This activity is ongoing and will continue until commissioning is completed in 2017.

Dudgeon Wave Buoy

Partrac will recover a wave measurement buoy at the location below from 14th September, weather permitting. The measurement buoy will be redeployed on the 15th September.

All positions are WGS84.

	Latitude	Longitude	Latitude	Longitude
Proposed Location	53.29119	1.41049	53° 17.471' N	001° 24.629' E

The vessel MV Spectrum 1 will be used.

Mariners are requested to keep clear by a minimum of 500 metres or 1/3 of a mile.

GENERAL

MARINERS ARE HEREBY INFORMED that a statutory construction Safety Zone (exclusion zone) is in place at the wind farm site. This safety zone is defined by:
A 500 metres radius around each wind turbine, offshore sub-station and their foundations whilst work is being performed as indicated by the presence of construction vessels; and
A 50 metres radius around each wind turbine, the offshore sub-station platform and associated foundation structures installed, complete or incomplete but waiting to be commissioned as part of the Dudgeon offshore wind farm where personnel are present on, or are being landed on or being taken from, the structures.

All vessels will exhibit appropriate lights and shapes prescribed by the International Regulations for Preventing Collisions at Sea.

ALL VESSELS ARE REQUESTED to give all construction and support vessels a wide berth.

MARINERS ARE ADVISED to navigate with caution and keep continued watch on VHF Ch. 16 when navigating the area.

A further notice to mariners will be issued when these works are completed, expected autumn 2016.

Please direct any enquiries regarding this notice to:
Statoil Wind Control Centre - statoilwindcontrol@statoil.com

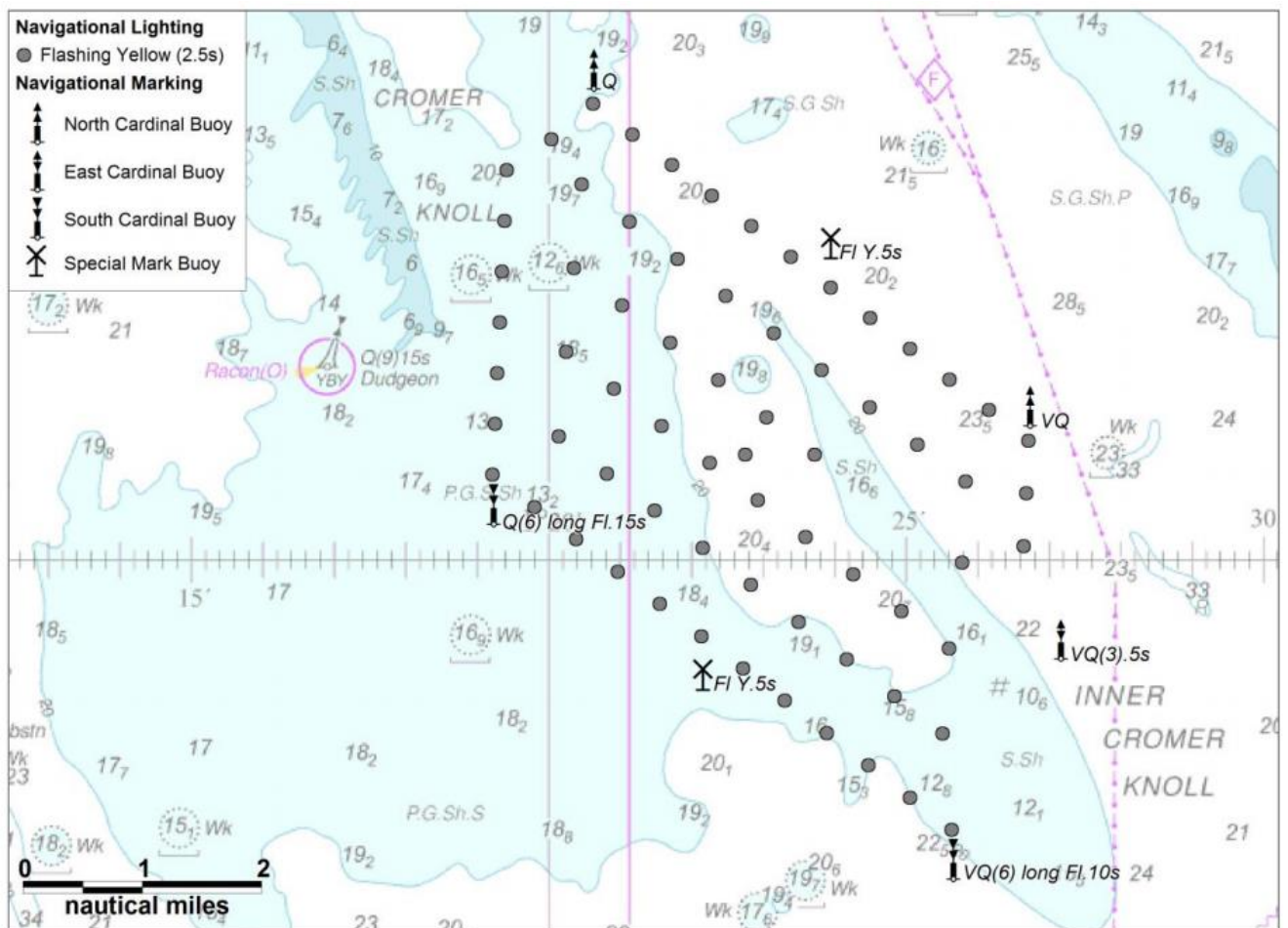
A copy of this notice can also be found at:

<http://dudgeonoffshorewind.co.uk/news/notice-to-mariners>

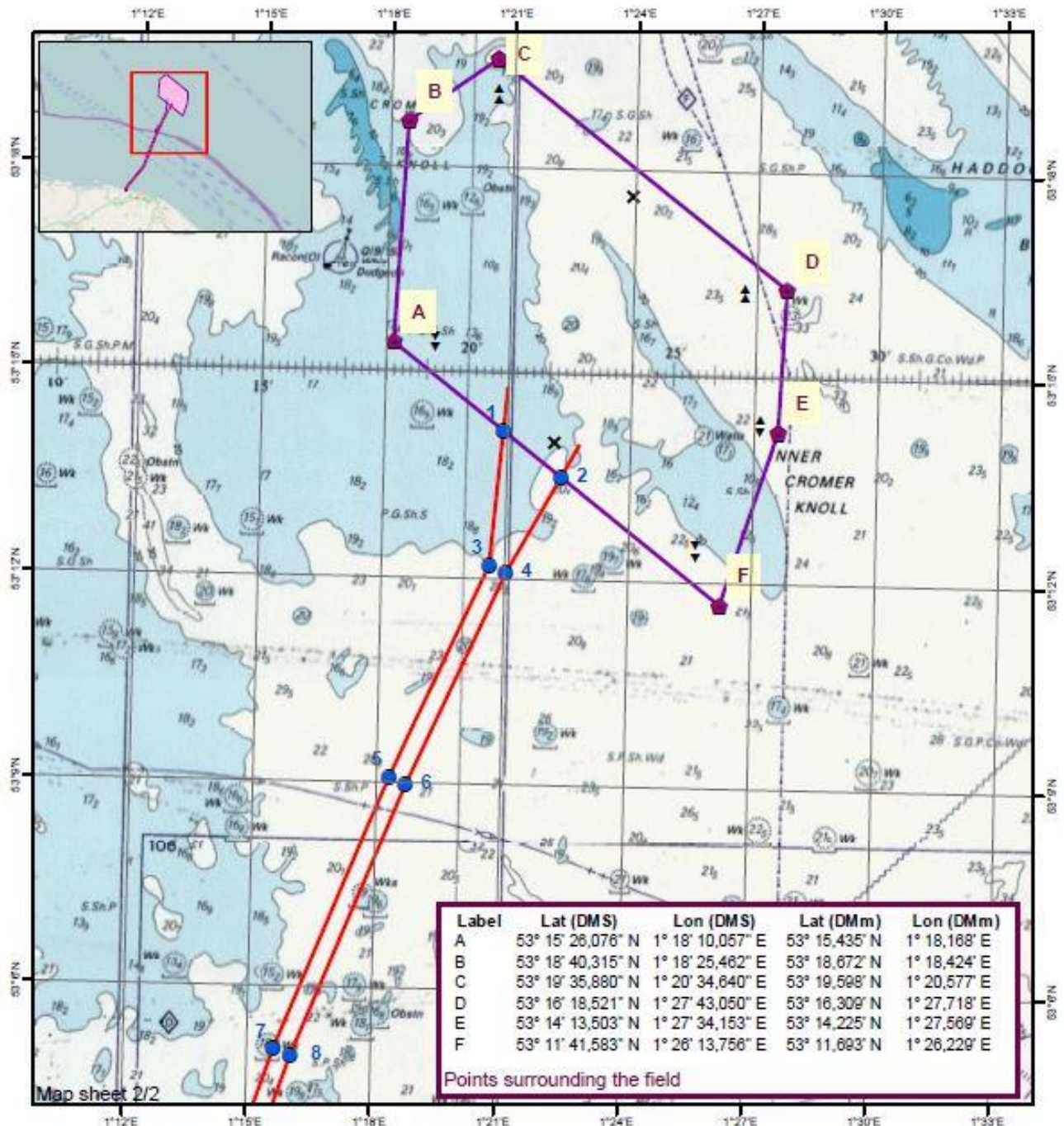
SITE DETAILS

Position of Navigation Buoys demarcating the Dudgeon Offshore Wind Farm site

Mark	Location	Name	Latitude	Longitude	Status	Flash Character	Code	Range
North Cardinal	NW Cardinal	N-DOW	53° 19,102' N	1° 20,592' E	Temporary	Q	601	5nm
Special Mark	Special Mark North	DOW - SM - N	53° 17,631' N	1° 23,919' E	Temporary	Fl.Y.5s	328	5nm
North Cardinal	North East Cardinal	NE - DOW	53° 16,277' N	1° 26,691' E	Temporary	VQ	501	5nm
East Cardinal	East Cardinal	E- DOW	53° 14,320' N	1° 27,123' E	Temporary	VQ(3).5s	508	5nm
South Cardinal	SE Cardinal	S - DUDGEON	53° 12,470' N	1° 25,617' E	Permanent	VQ(6) long Fl.10s	516	5nm
Special Mark	Special Mark South	DOW - SM - S	53° 14,012' N	1° 22,132' E	Temporary	Fl.Y.5s	328	5nm
South Cardinal	SW Cardinal	SW - DOW	53° 15,451' N	1° 19,188' E	Temporary	Q(6) long Fl.15s	631	5nm

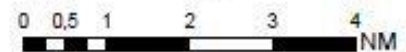


Wind farm area and cable corridor north












Label	Lat (DMS)	Lon (DMS)	Lat (DMm)	Lon (DMm)
1	53° 14' 10,494" N	1° 20' 53,200" E	53° 14,175' N	1° 20,887' E
2	53° 13' 30,784" N	1° 22' 18,795" E	53° 13,513' N	1° 22,313' E
3	53° 12' 12,063" N	1° 20' 36,508" E	53° 12,201' N	1° 20,608' E
4	53° 12' 5,472" N	1° 21' 1,112" E	53° 12,091' N	1° 21,019' E
5	53° 9' 4,426" N	1° 18' 17,288" E	53° 9,074' N	1° 18,288' E
6	53° 8' 58,127" N	1° 18' 42,081" E	53° 8,969' N	1° 18,701' E
7	53° 5' 4,975" N	1° 15' 38,228" E	53° 5,083' N	1° 15,637' E
8	53° 4' 59,401" N	1° 16' 3,461" E	53° 4,990' N	1° 16,058' E

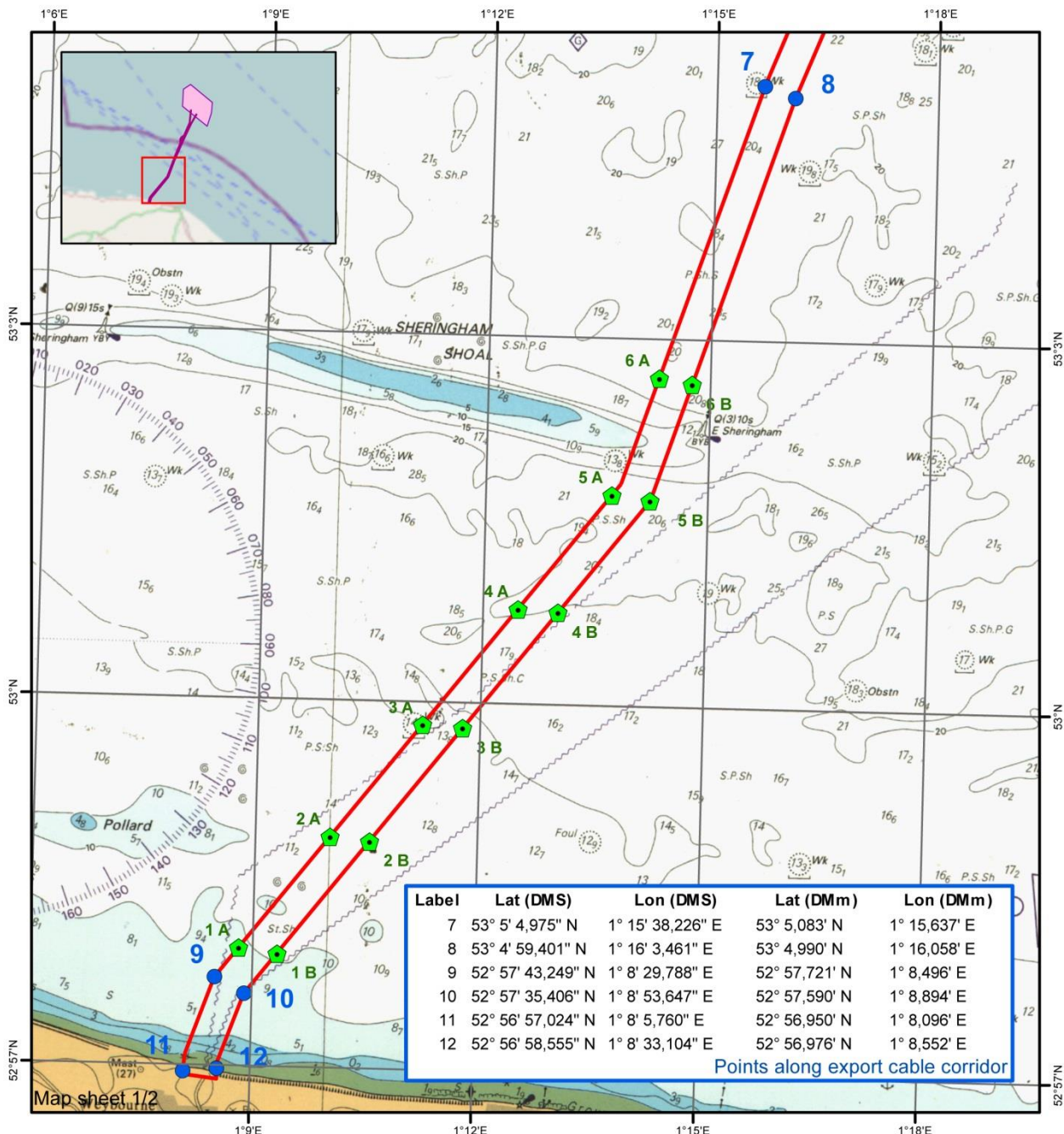
Points along export cable corridor



Legend

-  Fields Boundary Corner points
-  Field Boundary added 1000m
-  Survey Area - Export Cable, points
-  Survey Area - Export Cable
-  East Cardinal
-  North Cardinal
-  South Cardinal
-  Special Mark
-  West Cardinal

Cable corridor south and export cable landfall



Label	Lat (DMS)	Lon (DMS)	Lat (DMm)	Lon (DMm)
1 A	52° 57' 57,894" N	1° 8' 48,791" E	52° 57,965' N	1° 8,813' E
1 B	52° 57' 55,481" N	1° 9' 19,702" E	52° 57,925' N	1° 9,328' E
2 A	52° 58' 53,227" N	1° 10' 0,633" E	52° 58,887' N	1° 10,011' E
2 B	52° 58' 51,451" N	1° 10' 32,388" E	52° 58,858' N	1° 10,540' E
3 A	52° 59' 49,079" N	1° 11' 13,216" E	52° 59,818' N	1° 11,220' E
3 B	52° 59' 47,890" N	1° 11' 45,752" E	52° 59,798' N	1° 11,763' E
4 A	53° 0' 46,724" N	1° 12' 28,201" E	53° 0,779' N	1° 12,470' E
4 B	53° 0' 45,434" N	1° 13' 0,623" E	53° 0,757' N	1° 13,010' E
5 A	53° 1' 43,601" N	1° 13' 42,256" E	53° 1,727' N	1° 13,704' E
5 B	53° 1' 41,112" N	1° 14' 13,136" E	53° 1,685' N	1° 14,219' E
6 A	53° 2' 41,270" N	1° 14' 18,352" E	53° 2,688' N	1° 14,306' E
6 B	53° 2' 38,543" N	1° 14' 45,145" E	53° 2,642' N	1° 14,752' E

Points marking 1NM intervals from shore



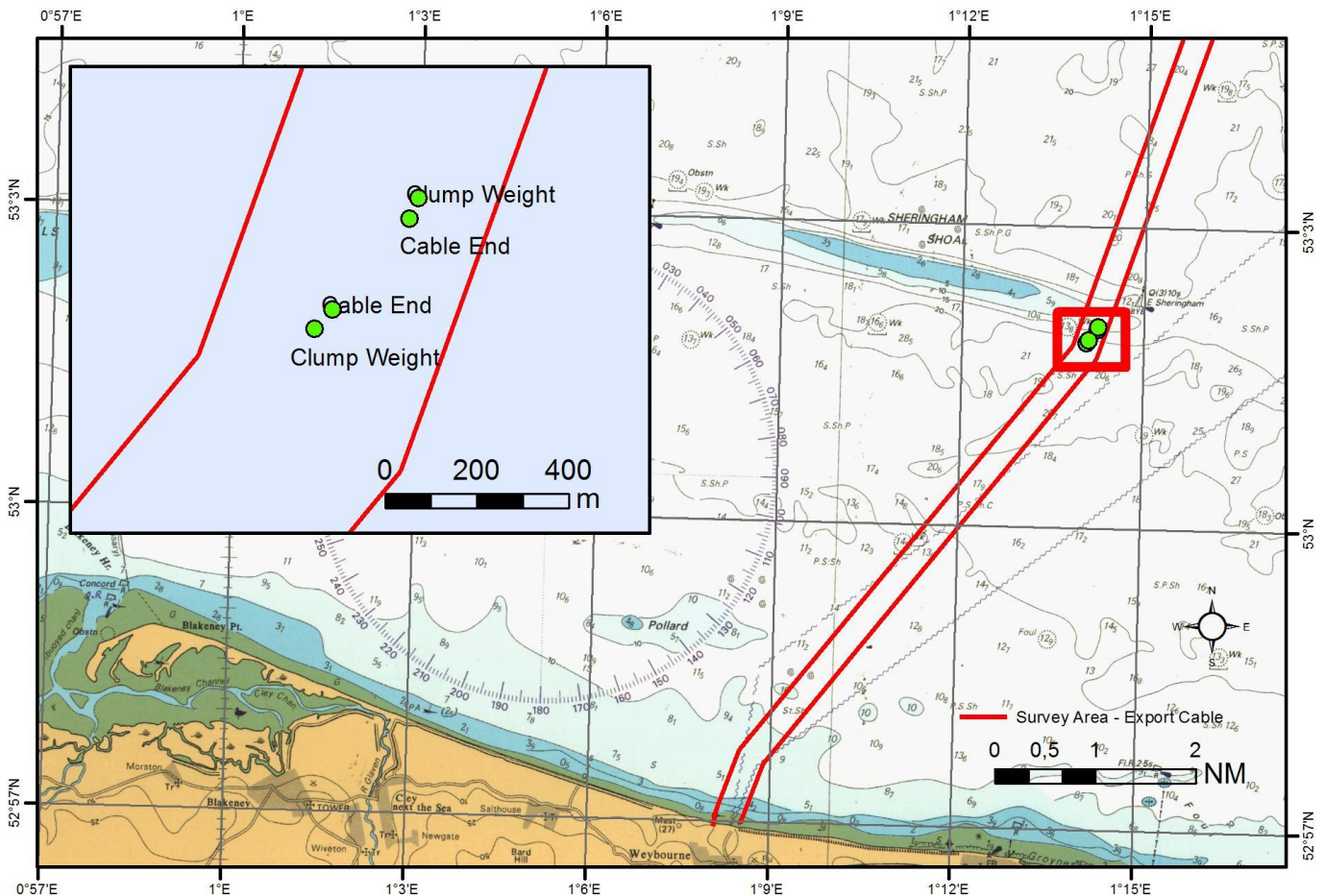
- Legend**
-  1 NM interval from shore
 -  Survey Area - Export Cable, points
 -  Survey Area - Export Cable



GUARD VESSEL LOCATION

Unprotected section of the Export Cable.

There is an unprotected section of the export cable on the seabed awaiting confirmation of adequate protection by burial. This location is defined by the following area:



Cable End: 381789 E, 5877403 N / 53° 01.984' N, 001° 14.229' E

Clump Weight: 381808 E, 5877449 N / 53° 02.009' N, 001° 14.244' E

Holdback anchor / Marker buoy for initiation clump weight

Clump Weight: 381582 E, 5877163 N / 53° 01.853' N, 001° 14.048' E

Cable End: 381621 E, 5877206 N / 53° 01.876' N, 001° 14.082' E

KEY CONSTRUCTION VESSEL CONTACT DETAILS

Grand Canyon



Callsign: 3EVR8

Bridge phone: V-sat: +47 22 03 44 99

Captain: V-sat +47 21 03 45 00 / Immarsat +870 773205466

E-mail : master@grand-canyon.no / Gc1bridgesupt@helixesg.com

Adventure



Callsign: 2IFE4

Bridge Phone: V-sat 01947750717

E-mail : adventureGS@gmail.com / adventure.guard1@gmail.com

Sorrento



Callsign: 2XLE

Bridge Phone: Sat-ph:0087 0765105326, Mobile ph.: 07842585022

E-mail : -

Rachael S



Callsign: 2FSB

Bridge Phone: GSM, mob 07880581433, SAT.TEL: 0088 1622469422

E-mail : rachaelsgy305@e-catch.co.uk

Advance WY77



Callsign: MZNA6

Bridge Phone: Sat. Phone: 00870773231090/01947 240024

E-mail : adventureGS@gmail.com

SEA Challenger



Callsign: OWLQ2

Bridge Phone: V-sat: +45 89 88 90 10

Master phone: vsat +45 89 88 90 11 / GSM +45 52 13 95 80

E-mail : seachallenger@a2sea.com / Master mast_sc@a2sea.com

Vestland Cygnus



Callsign: C6BW7

Bridge Phone: VSAT.TEL: +4723677230; +4723677230 / GSM: +47 41 43 02 07

E-mail : captain.cygnus@vestlandoffshore.no ; bridge.cygnus@vestlandoffshore.no

Njord Esvagt



Callsign: OWZN2

Bridge Phone: VSAT.TEL: +45 32 71 26 89; / GSM: +45 32 71 26 85

E-mail : njord@esvagtvesel.com